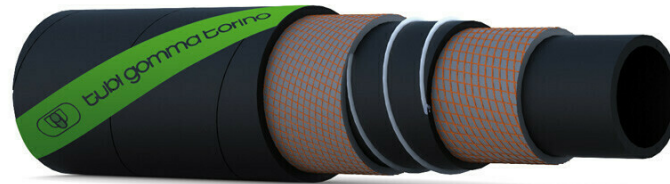


AQUAMASTER SD /10

WATER SUCTION AND DELIVERY HOSE



APPLICATION

Suction and delivery hose for water and inert fluids for sprinkler irrigation equipments. Very strong and flexible structure

TUBE

Black, smooth, **SBR** rubber compound

REINFORCEMENT

High strength synthetic plies with steel wire spirals

COVER

Black, smooth, cloth impression **SBR/EPDM** rubber compound, abrasion and weather resistant

WORKING TEMPERATURE

-22°F +176°F
-30°C +80°C

ID		OD		WEIGHT	WP		BP		BENDING RADIUS	VACUUM	COIL LENGTH
mm	inch	mm	inch	kg/m	bar	psi	bar	psi	mm	bar	m
19	3/4	29	1 9/64	0.55	10	150	30	450	115	0.9	20/40/61
25	1	35	1 3/8	0.77	10	150	30	450	150	0.9	20/40/61
30	1 3/16	40	1 37/64	0.91	10	150	30	450	180	0.9	20/40/61
32	1 1/4	42	1 21/32	0.97	10	150	30	450	190	0.9	20/40/61
35	1 3/8	45	1 25/32	1.08	10	150	30	450	210	0.9	20/40/61
38	1 1/2	48	1 57/64	1.20	10	150	30	450	230	0.9	20/40/61
40	1 37/64	50	1 31/32	1.28	10	150	30	450	240	0.9	20/40/61
45	1 25/32	56	2 13/64	1.49	10	150	30	450	270	0.9	20/40/61
51	2	62	2 7/16	1.76	10	150	30	450	310	0.9	20/40/61
60	2 23/64	71	2 13/16	1.93	10	150	30	450	360	0.9	20/40/61
63.5	2 1/2	76	3	2.40	10	150	30	450	380	0.9	20/40/61
70	2 3/4	82	3 15/64	2.65	10	150	30	450	420	0.9	20/40/61
76	3	88	3 15/32	2.85	10	150	30	450	460	0.9	20/40/61
80	3 5/32	92	3 5/8	3.09	10	150	30	450	480	0.9	20/40/61
90	3 35/64	102	4	3.20	10	150	30	450	540	0.9	20/40/61
102	4	117	4 39/64	4.00	10	150	30	450	610	0.9	20/40/61
110	4 21/64	123	4 27/32	4.66	10	150	30	450	660	0.9	20/40/61
120	4 23/32	137	5 25/64	5.21	10	150	30	450	720	0.9	20/40/61
127	5	144	5 43/64	7.00	10	150	30	450	760	0.9	20/40/61
152	6	170	6 11/16	10.00	10	150	30	450	920	0.8	20/40/61
203	8	228	8 31/32	17.00	10	150	30	450	1220	0.7	20/40
254	10	280	11 5/16	20.35	10	150	30	450	1524	0.7	20
305	12	331	13 5/16	27.00	10	150	30	450	2100	0.5	12

Other diameters, pressure ratings are available on request. Technical data, structures and polymers are subject to change without notice.

BRANDING



Tubi Gomma Torino S.p.a. 15040 Mirabello Monferrato (AL) - ITALY - Strada Statale 31 - km 39,4 Nr. 42
Ph: +39 0142.641300 Fax: +39 0142.641350 e-mail: com@tubigommatorino.it

Copyright © TUBI GOMMA TORINO S.p.a. - All rights reserved. The texts and images are owned by Tubi Gomma Torino S.p.a. Even partial reproduction of the catalog is prohibited. In the continuous search for technical and functional improvements, Tubi Gomma Torino S.p.a reserves the right to make changes to its products, which can be made without notice.